

130mm

**Warning**

1. Never leave your child unattended
2. Do not use the high chair unless all components are correctly fitted & adjusted
3. Always ensure to fasten the safety harness
4. Do not use the chair near open fire and heating devices
5. Do not use the high chair until your child starts to sit without assistance
6. Do not use the high chair if there is a broken, damaged or missing part
7. Periodically check the buttons and harness system for safety
8. Always use the chair on flat even surface
9. When not in use keep the chair away from children
10. Please ensure that the high chair has been assembled correctly by following this instruction sheet. Failure to do so can cause harm to your child
11. Do not allow your child to stand up while he/she is in the chair
12. Ensure your high chair is fully erected before placing your child inside
13. Regularly check all the parts for wear and tear
14. Please retain this manual for future reference
15. Please ensure that the high chair is assembled by an adult

**CLEANING & CARE INSTRUCTIONS**

Clean all fabrics with mild soap & warm water. Let it dry naturally. Do not dry in direct heat source or direct sun.

Please clean heavy dirty spots with non-abrasive cream, oil all movable parts regularly.

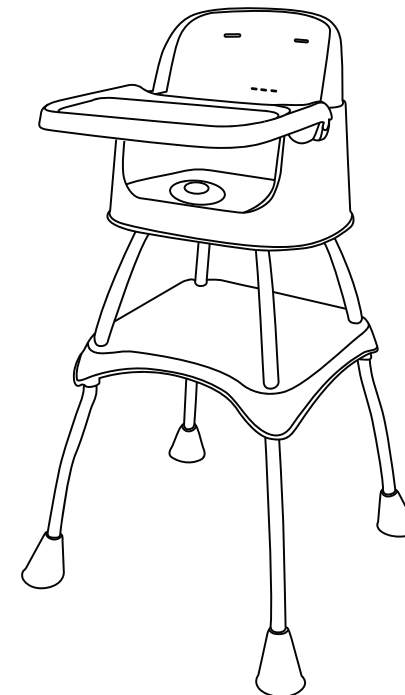
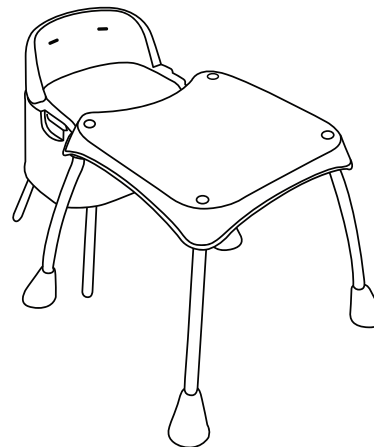


**R for Rabbit**

**Imported & Marketed By:** R FOR RABBIT BABY PRODUCTS PVT.LTD.  
708,7th Floor, Pinnacle Business Park, Corporate Road,  
Prahlad Nagar, Ahmedabad, Gujarat 380015  
079-410-57596 | [www.rforrabbit.com](http://www.rforrabbit.com) | [customer care@rforrabbit.com](mailto:customer care@rforrabbit.com)



**R for Rabbit**



**CHERRY BERRY GRAND**

**THE CONVERTIBLE HIGH CHAIR**

- EN-14988 Safety Certified Product.
- Non Slippery & Anti-Tipping Design
- Five Point Safety Harness
- Arc Design to remove Sharp Edges and Avoid any Injury
- Convertible 4 in 1 Feeding High Chair ,  
Study Table, Baby Chair & Booster Chair.
- Removable Meal Tray for Easy Wash

**INSTRUCTION MANUAL**

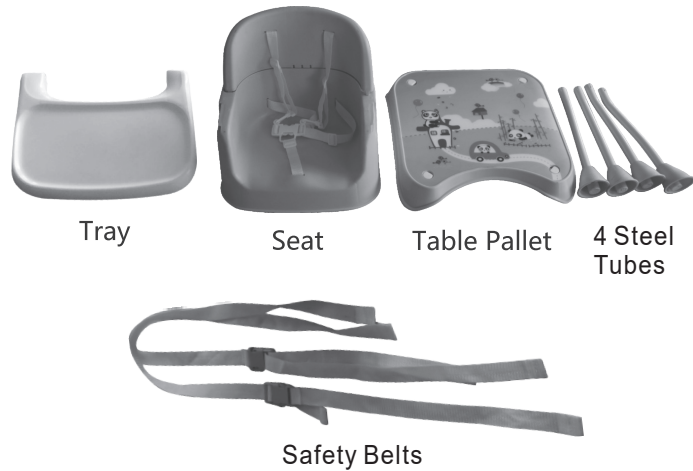


Safety  
Certified

185mm

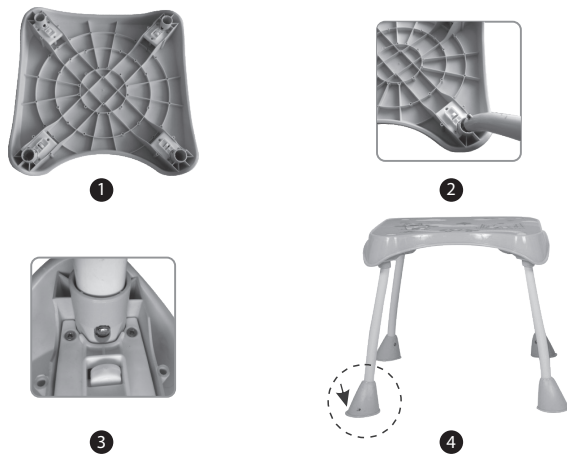
## Cherry Berry Grand

### PARTS LIST



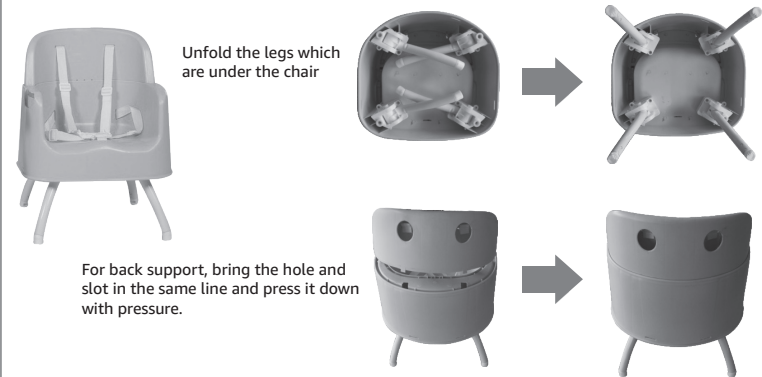
### INSTALLATION STEPS

1. At the back of table pallet, install the 4 steel tubes which are the legs of table. Insert each leg in the hole till the clip spring gets out.  
Note: The hoofs (foot of the legs) should point outward.

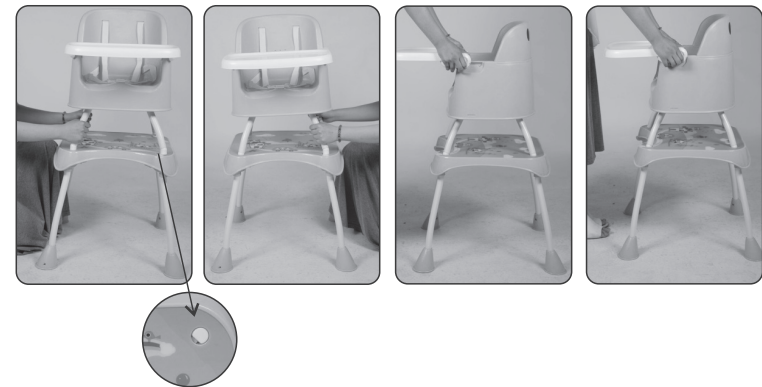


## Cherry Berry Grand

### 2. Assembling Chair



3. Check the holes on the table pallet and put the leg into spring button then install the tray into the chair.



**⚠ WARNING: Always fasten the seat belt while using to keep your baby safe.**