

130mm

⚠WARNING:

1. Check the buggy is fully erected and all safety locks are engaged before placing a baby in the buggy.
2. Do not leave children unattended.
3. Do not carry extra child or bag in the buggy, it may cause the buggy unstable.
4. Secure the child in the harness at all the time.
5. Do not use it at bad place, such as uneven, stove, stairs, very cold, very hot.
6. Put on all brakes when park the buggy.
7. Ensure that the safety harness is adjusted firmly and comfortably to the child's body.
8. A harness can form loops that may be a strangulation hazard, never leave harness straps connected when not fitted to a child in the buggy.
9. Make sure children are clear of any moving parts if you are folding, unfolding or adjusting the buggy, otherwise they may be injured.
10. Do not attempt to lift the buggy by the bumper bar.
11. Engage front wheel swivel lock, to lock the front wheels when traveling on rough or uneven surface.
12. To avoid danger of suffocation, keep any plastic bags away from babies and children. do not use plastic bags in cribs, beds, carriages or playpens. Plastic bags can block nose and mouth and prevent breathing. Bags are not toys, please dispose of waste packaging thoughtfully.
13. Regularly inspect the buggy for any parts that are loose, broken, torn or missing, attend to the problem as soon as it is noted.
14. Keep children away from the buggy when unfolding and do not let them play with the folded buggy.
15. The weight of the child using this buggy should not be more than 15KGS, The maximum load of the shopping basket is 2kgs, the maximum load of pocket is 0.2kgs. Please don't make them overload.
16. This seat is not suitable for children under 6 months. The buggy is suitable for 6-36 months.
17. Do not add a mattress thicker than 25mm.
18. Ensure that all locking devices are engaged before use.
19. To avoid injury ensure that your child is kept away when unfolding and folding this product.
20. Do not let your child play with this product.
21. Use a safety harness as soon as your child can sit unaided.
22. Always use the restraint system.
23. Check that pram body or seat unit attachment devices are correctly engaged before use.
24. This product is not suitable for running or skating.
25. Prohibiting the use of non-manufacturer supplied accessories.
26. Prohibition on the handlebar or backrest hanging objects, affecting the buggy stability.

Maintenance Common sense:

When wash the fabric, please use soft brush; when wash the others parts, please use soap. Regularly check for the loose parts and tighten when required. When open or close the buggy, please read instruction carefully first.



Instruction Manual

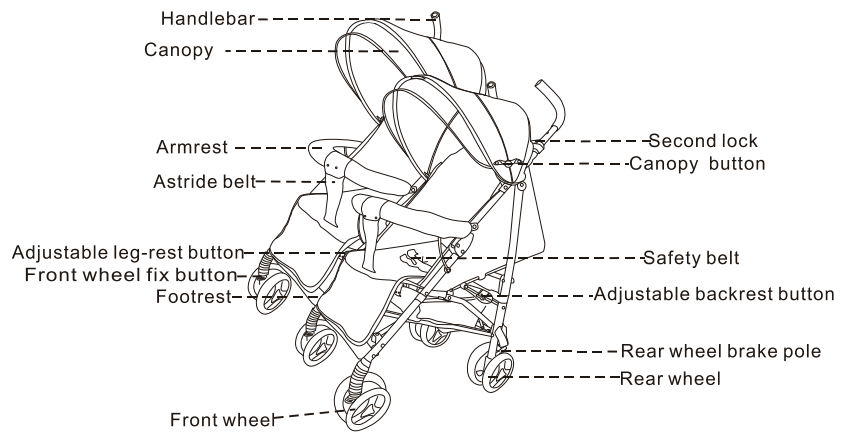
Model: Ginny N Johnny-Compact Folding Twin Stroller



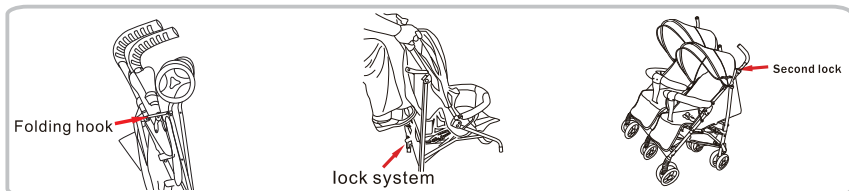
185mm

130mm

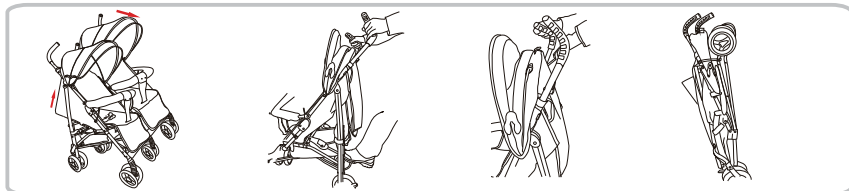
Parts



Open and close the buggy

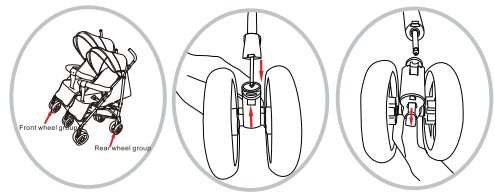


Open frame: take off the side folding hook, open the frame and press the key of lock system.



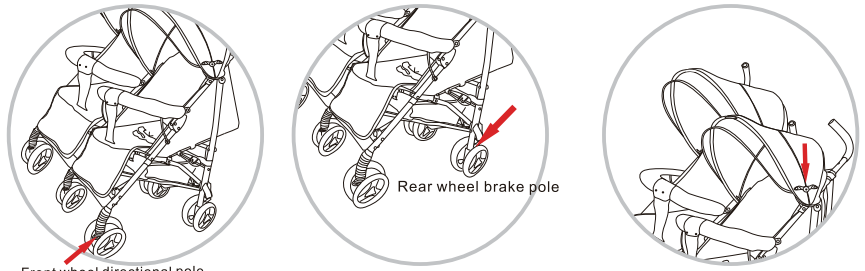
Close frame: In braking mode, close the canopy first, open the lock system and pull it up with your foot, and at same time pull up the second lock with your hand. After folded, buckle the side folding hook.

Install and unload the wheels:

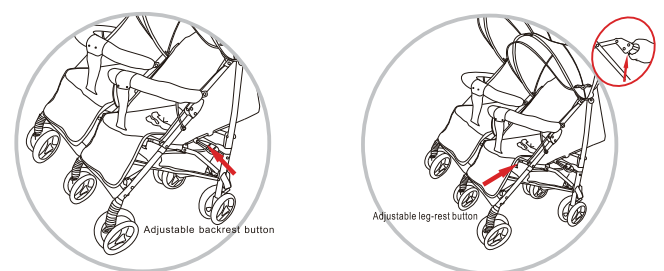


1. Install and take-down of front wheel group: insert the front wheel group into the cover core of front foot tube, when the barb of cover core of front wheel spring out, the installation is ok. If you need to take down the front wheel, just hold the barb and pull out the wheels, then the front wheel group will be taken down.
2. Install and take down of rear wheel group: forced the rear wheel group into the back foot tube, when the spring piece come out and lock is ok. Press down the spring piece and pull out the wheels, the rear wheel could be taken down.

Using



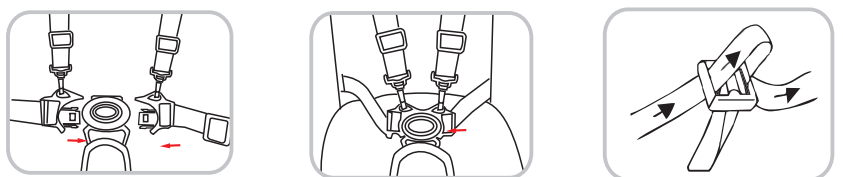
1. The front wheels can swivel and be fixed, when you press the button, it will be swivel and otherwise it will be fixed.
2. Brake: when you want to stop the buggy, you should press the button and brake it as picture.
3. Button of canopy: when you want to open the canopy, you only press the canopy button as picture. Otherwise close the canopy.



4. When you want to adjust the angle of the backrest, you should press the adjustable button as picture and choose the correct angle you want.
5. Adjustable Leg-rest button: press adjustable Leg-rest button and remove the leg-rest, the angle will be adjusted.

Using the safety-belt

Warning: in order to keep your baby safety, when you use the buggy, you should fasten the safety belt.



1. Insert the fasteners into the buckles as shown in the figure above.
2. Open the buckle as shown in the figure above by pressing the buckle plug and pulling it outward direction.
3. Adjust the length of the belt as shown in the figure above.

185.00 mm