

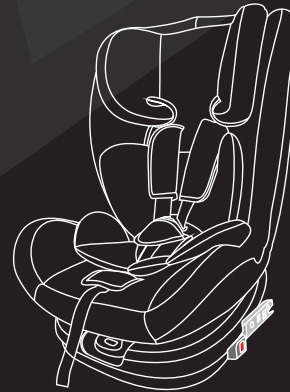


**R for Rabbit**  
*The Amazing Baby Company*

Imported & Marketed By  
**R FOR RABBIT BABY PRODUCTS PVT. LTD.**  
708, 7th Floor, Pinnacle Business Park, Corporate Road,  
Prahlad Nagar, Ahmedabad, Gujarat 380015  
For Customer Support: C: +91-79-410-57595 | W: [www.rforrabbit.com](http://www.rforrabbit.com)  
E: [customercare@forrabbit.com](mailto:customercare@forrabbit.com)



**R for Rabbit**<sup>®</sup>  
*The Amazing Baby Company*



## Jack N Jill Grand ISOFIX



0+ 1 2 3

**Group 0+ / 1 / 2 / 3 (0-36kg)**



Suitable for children

**0-36** kg

Approx 0-12 years old

# Directory

Directory..... 01

Important.....02-04

Security check ..... 05

Compositions of Safety Seat .....06

Group 0+Rearward installation(isofix+top tether) .....07-10

Group 0+Rearward installation(3-point vehicle belt installation).....11-12

group I forward installation ..... 13-17  
(FIX interface + 3-point vehicle belt installation or 3-point vehicle belt installation only )

Remove /installation of 5 points child safety belts .....18

Group I/III forward installation(FIX interface+3-point car belt) .....19-22

Remove /installation of seat cover .....23

Maintenance and preservation .....24

## IMPORTANT



- 1.This car seat is equipped with ISOFIX system, which meets the standards of ECE R44/04
- 2.The system is installed in the fixed position of ISOFIX according to the type of car seat and the type of fixing device (described in the installation vehicle manual).
- 3.The suitable quality group and ISOFIX size category of the planned ISOFIX child restraint system is: group 0+(0-13KG/D).
- 4.Consult manufacturers and retailers of child car seat if you have any questions.

1.This child restraint system conforms to the "semi-general" application and is suitable for installation in

| Model  | Front row | Back row |        |
|--|-----------|----------|--------|
|  |           | Sides    | Middle |
| All rear seat belts ISOFIX fixed point and pull-up belt fixed point models | NO        | YES      | NO     |

Other car seat positions may also be suitable for the installation of this child restraint system.If in doubt, please consult the manufacturer or retailer of child restraint system.

2. Semi-universal group I II III (9,36kg), ISOFIX interface + 3-point seat belt + 5-point seat belt(group I)This child restraint system conforms to the "semi-general class", suitable for installation in the following car seat positions

| Model   | Front row | Back row |        |
|---|-----------|----------|--------|
|   |           | Sides    | Middle |
| All rear seat belts ISOFIX fixed point models | NO        | YES      | NO     |

Other car seat positions may also be suitable for the installation of this child restraint system.If in doubt, please consult the manufacturer or retailer of child restraint system.

Other car seat positions may also be suitable for the installation of this child restraint system. If in doubt, please consult the manufacturer or retailer of child restraint system. Only when the applicable vehicle is equipped with a three-point seat belt required by GB 14166 or ECE R16.

**Special tips:** this product will reduce the harm of traffic accidents to children, but can not guarantee the absolute safety of children. Therefore, when driving, please strictly abide by the local traffic regulations.

## ! ATTENTION

### Scope of application:

- This product is suitable for children weighing 0-36 kg (aged about 0-12 years).
- ▲ **Important - Do not use it forward until a child weighs more than 9 kg (see instructions)**

### Attention:

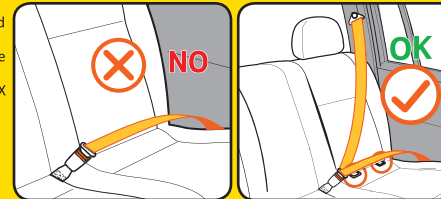
- Please read this manual carefully before installation and use. This product is only applicable when the applicable vehicle is equipped with a three-point seat belt required by 814166 or ECE R16, and the standard ISOFIX is fixed point and pull-up belt fixed point. Improper installation and use may result in serious injury, in which case the manufacturer is not directly responsible or asked to take over.
- 1. Read the manufacturer's manual about ISOF for fixed points.
- 2. Do not modify or add or subtract any parts to the seat, otherwise it may seriously affect its function and safety.
- 3. After unpacking, please dispose of the plastic bags properly in order to avoid suffocation
- 4. Do not install or use this child restraint until you closely read and understand the installation instructions provided by the child restraint manufacturer.
- 5. Do not secure your child restraint in forward vehicle seating position equipped with airbag.
- 6. Please pay attention to all the red stickers or red plastic parts on the seat, which are the belt routes for installation
- ▲ **Warning: In high temperature, leaving children alone in the chair may have serious consequences!**
- 7. Any straps holding the restraint to the vehicle should be tight, that any straps restraining the child should be adjusted to the child's body, and that straps must not be twisted.
- 8. Children can not be left in their child restraint system unattended.
- 9. Do not expose the seat to corrosive substances. When the plastic parts are stained, you can wipe them with a clean wet cloth. Do not use any solvent.
- 10. This product has the quality assurance of the manufacturer, but the manufacturer does not guarantee the quality of the second-hand products.
- 11. Ensuring that any lap strap is worn low down, so that the pelvis is firmly engaged. shall be stressed.
- 12. The child restraint should be changed when it has been involved in an accident.
- 13. Do not make any alteration or additions to the device without the approval of the competent authority.
- 14. When the chair is not provided with a textile cover, the chair should be kept. away from sunlight Otherwise it may be too hot for your child's skin.
- 15. Do not use any part which can not match the safety car seat in order to avoid irreversible damage to the safety seat.
- 16. Any luggage or other subjects liable to cause injuries in the event of a collision must be properly secured.
- ▲ **Warning: Do not use any other force point except the ones marked on manual and Child restraint system.**
- 17. The child restraint must not be used without the cover.
- 18. The seat cover should not be replaced with any other than the one recommended by the manufacturer, because the cover constitutes an integral part of the restraint performance.
- 19. The instructions must be retained on the child restraint for its life period.
- 20. Do not use any load bearing contact points other than those described in the instruction and marked in the child restraint.
- 22. The rigid items and plastic parts of a child restraint must be located following this instruction and installed that they are not liable during everyday use of the vehicle to become trapped in a movable seat or in a door of the vehicle.
- 23. If you have question, please contact the manufacturer or distributor.

03

## ! ATTENTION

### ! warning

Please Fix the child restraint by vehicle 3 point belt, ISOFIX interface system and Top Tether.



"Only suitable if the approved vehicle is fitted with 3 point safety-belts approved to UN/ECE Regulation No.16 or other equivalent standards"

### Choose the right positions in vehicle seat to install

Do not install the safety car seat in the front vehicle seat equipped with airbags, unless the airbag is closed. Otherwise the airbag may result in death or serious injury when a collision occurs. The safety seat must be used on the vehicle seat which is forward facing, do not use on the vehicle seat rear facing or lateral. Please see the below photos to understand well.



✓ Suitable

✗ Not suitable

▲ Requires specific conditions

**Note:** Please make sure that the airbag is in a closed state if you install the safety seat in the airbag position.

04

## SECURITY CHECK

### Installation of Safety Seats

- Must be installed in the forward facing vehicle seat
- Installed in the position of inactive airbag
- Use 3-point vehicle belts
- Vehicle belt fastening without distortion
- Vehicle seat belts should be passed along the specified path points on the seat.
- The seat is installed on the vehicle seat to ensure that it is firmly installed.
- Ensure that the child car seat is not damaged
- Ensure ISOFIX anchors are installed on the vehicle

### Find out which installation is suitable for your baby

Rearward installation of group 0 +

- Weight: from birth to 13KG
- Age: approx under 15 months

Forward Installation Group I

- Weight: 9-18KG
- Age: approx 9 months to 4 years old

Forward Installation Group II

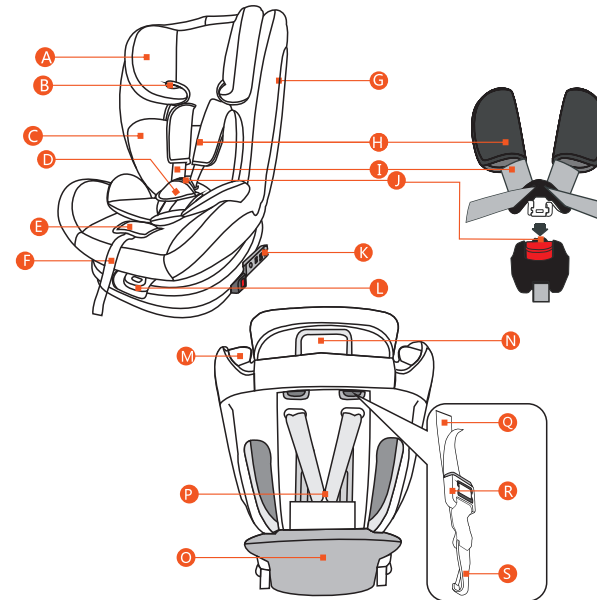
- Weight: 15-25KG
- Age: approx 3-7 years old

Forward Installation Group III

- Weight: 22-36KG
- Age: approx 6-12 years old



## COMPOSITIONS OF SAFETY SEAT



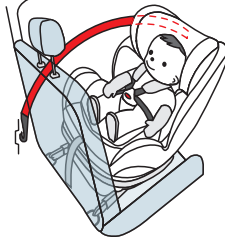
- |                                    |                               |
|------------------------------------|-------------------------------|
| A headrest                         | K. ISOFIX interface           |
| B. Headrest belt guide hook        | L. Rotating Adjustment Handle |
| C. inner liner                     | M. seat belt guide hook       |
| D. buckle pad                      | N. Headrest adjust handle     |
| E. Shoulder strap adjusting button | O. Base                       |
| F. adjusting strap                 | P. Metal yoke plate           |
| G. Backrest                        | Q. Top tether belt            |
| H. Shoulder pads                   | R. Top tether adjuster        |
| I. shoulder strap                  | S. Top tether hook            |
| J. Buckle                          |                               |

## GROUP 0+ INSTALLATION ① ISOFIX interface + top tether belt

Suitable for baby weight 0-13kgs, Approx. from birth to 15 months

### Used for group 0+

1. Children's car seat must be installed in rearward facing.
2. Use ISOFIX interface + top tether belt to fix child car seat:  
Use 5-point seat belts to restrain children;

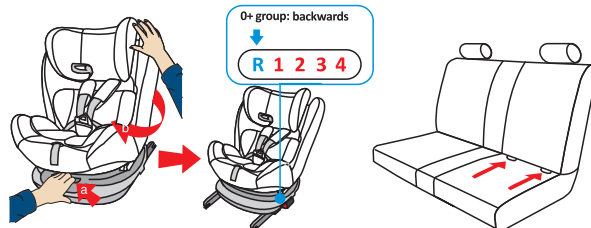


**Warning:** Do not use any other force point except the ones marked on manual and Child restraint car seat. If you have any question, please contact the manufacturer or distributor.

### group 0+ : ISOFIX interface + installation steps of top tether



1. Pull the handle to adjust the seat recline angle to the R position and then release the handle

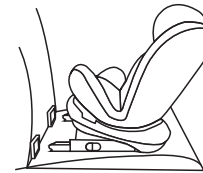


2. Pull the rotating adjusting handle backward with one hand and rotate 180 degree to the left or right with the other hand to make in the correct position
3. Find the ISOFIX fixing point on the car

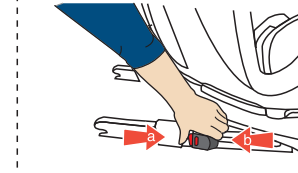
07

## GROUP 0+ INSTALLATION ① ISOFIX interface + top tether belt

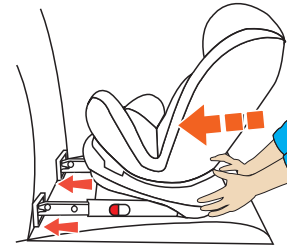
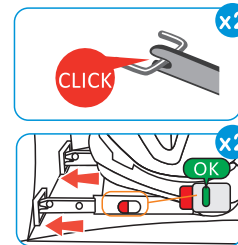
Suitable for baby weight 0-13kgs, Approx. from birth to 15 months



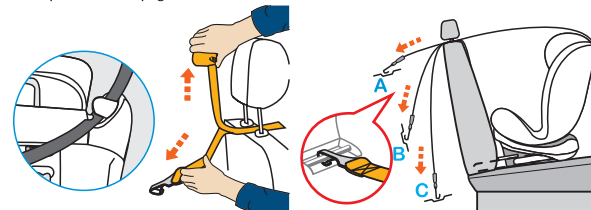
4. Put the rearward facing child car seat on the vehicle seat



5. Release the ISOFIX interface by pressing the red part of the ISOFIX interface button inward [a], and then launch the ISOFIX interface [b]



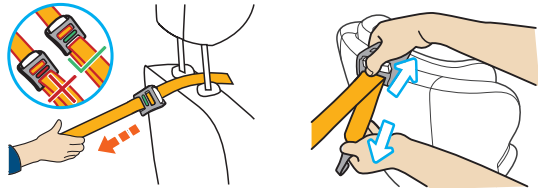
6. Align the ISOFIX interface on both sides to the vehicle guide sleeve and insert it forcefully, until hear the click. To make sure if it is installed successfully, please check if the indication inside the button is green like the photo shown, if it is red, please reinstall again until it is in green. Push the child safety car seat firmly against the vehicle back.



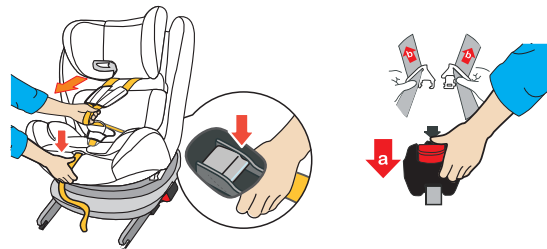
7. Take out the top tether belt and let it pass through the left or right seat belt guide hook on the top of backrest. At the same time, hook the top tether belt to the corresponding fixed point of vehicle seat

08

**GROUP 0+ INSTALLATION** ① **ISOFIX interface +top tether belt**  
 Suitable for baby weight 0-13kg, Approx. from birth to 15 months)



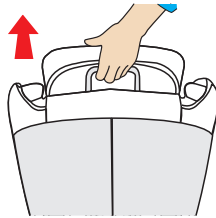
8. Tighten the top tether belt until the adjuster inside is green, and waggle the seat to check whether the top tether belt is tightened. If you want to release the top tether belt, you need to press the adjuster button and pull the belt in the opposite direction, then you can release the belt and take out the hook of the top tether belt.



9. Release the shoulder strap, press the adjusting button of the shoulder strap with one hand, and pull the shoulder strap outward with the other hand until the shoulder strap reaches its maximum length, finally release the safety buckle

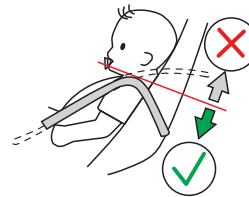


10. Place the child in the seat

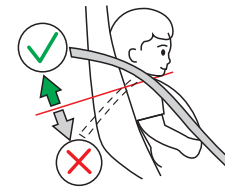


11. The height of the headrest and shoulder strap can be adjusted by pulling the headrest adjusting handle

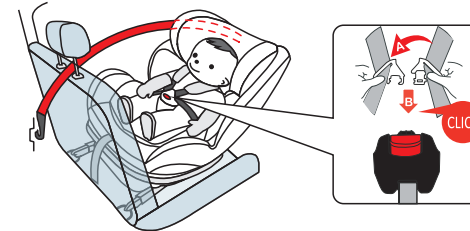
**GROUP 0+ INSTALLATION** ① **ISOFIX interface +top tether belt**  
 Suitable for baby weight 0-13kg, Approx. from birth to 15 months)



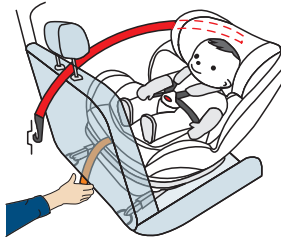
▲ **Warning:** When the seat is rearward installed (0-13KG), adjust the position of the headrest so that the shoulder strap height is slightly lower than the shoulder position, which should be based on the width of one finger



▲ **Warning:** When the seat is positioned forward (9-25KG), adjust the position of the head pillow so that the shoulder strap height is slightly higher than the shoulder position, which should be based on the width of one finger



12. Put the children's hands through the shoulder straps, place the left and right inserts of the clip together and insert to the buckle until hear the "click"



13. Pull the adjusting belt forward to tighten the shoulder strap. make sure the shoulder strap does not twist, lengthen or loosen.



▲ **Note:** Adjusting the shoulder strap until the shoulder pads close to the child's chest. The tightness is based on the thickness of the adult index finger.

**Group 0+ installation ②** by using vehicle safety belt  
 (Suitable for baby weight 0-13kgs, Approx. from birth to 15 months)

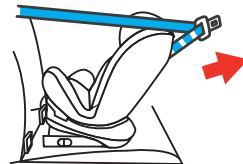


1. Make the child car seat rearward facing by pulling the rotation handle on the base.

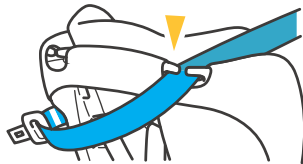
2. Make the child car seat in the R position by pressing the recline adjusting handle



3. Place the child car seat firmly against the back of the vehicle seat.



4. Pull out the vehicle safety belt as longer as possible.

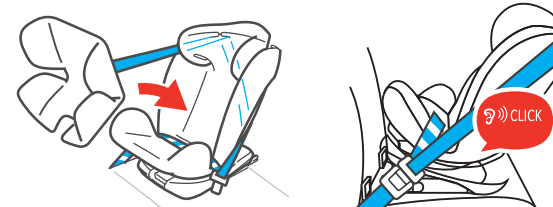


5. Place the diagonal vehicle belt through the guide hook on the back of the child car seat one side



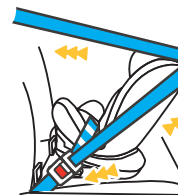
6. Release the buckle and pull the extra cushion out

**Group 0+ installation ②** by using vehicle safety belt  
 (Suitable for baby weight 0-13kgs, Approx. from birth to 15 months)

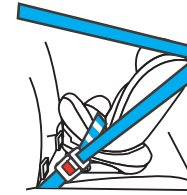


7. Place the lap belt through the base of the child seat and meanwhile put the extra cushion inside as original

8. Buckle the vehicle safety belt until you hear Click



9. Push hard and pull the diagonal belt along the direction of the picture shown



10. Waggle the child car seat to check if it is fitted firmly and not easy to move

**▲ Notice:** Make sure that the vehicle belt does not twist, lengthen or loosen

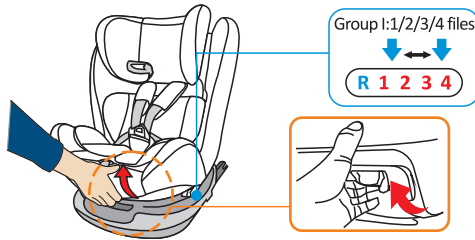
**GROUP I INSTALLATION** Detailed Installation of FIX Interface + Vehicle-mounted 3-point Seatbelt  
(Suitable for children aged 9-18 kg, 9 months to 4 years old)

**Group I Installation** (for 9-18kg children) -----

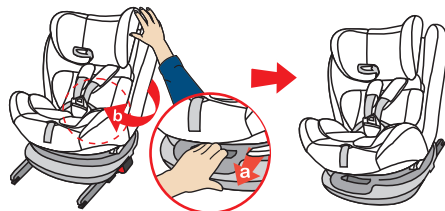
1. Forward-facing
2. Use FIX interface + vehicle 3-point seat belt to fix child seat, and use 5-point seat belt to restrain children



**Group I: FIX interface + 3-point vehicle belt installation steps** -----



1. Pull the handle to adjust the seat recline angle to the position 1,2,3, or 4 and then release the handle

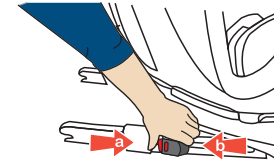


2. Pull the rotating adjusting handle forward with one hand, and rotate 180 degrees to the left or right with the other hand until you hear click sounds

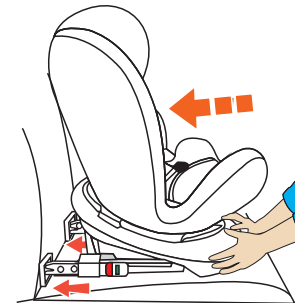
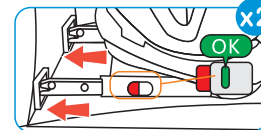
**GROUP I INSTALLATION** Detailed Installation of FIX Interface + Vehicle-mounted 3-point Seatbelt  
(Suitable for children aged 9-18 kg, 9 months to 4 years old)



3. Place the forward facing child car seat on the vehicle seat



4. Release the FIX interface, by pressing the red part of the FIX interface button inward [ a ], and then launch the FIX interface [ b ]

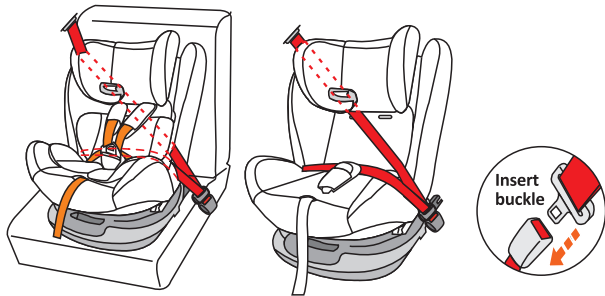


5. Align the FIX interface on both sides to the vehicle guide sleeve, insert if forcefully until hear the click. To make sure if it is installed successfully, please check if the indication inside the button is green like the photo shown, if it is red, please reinstall again until it is in green.



## GROUP I INSTALLATION

Detailed Installation of FIX Interface + Vehicle-mounted 3-point Seatbelt  
(Suitable for children aged 9-18 kg, 9 months to 4 years old)



6. Pull out the vehicle seat belt, place the diagonal belt through the guide hook under the headrest, then place both diagonal and lap belts through the groove from one side to the other side and buckle it until you can hear a click

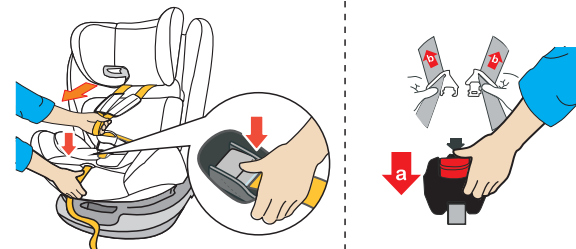


7. Push the vehicle child car seat **firmly** against the back of vehicle seat. Tighten the seat belt and press the car child seat with its own weight. Strengthen the seat belt and **firmly** secure the child seat.

**▲ Note:** Vehicle seat belts should not be loosened or twisted during the whole installation process.

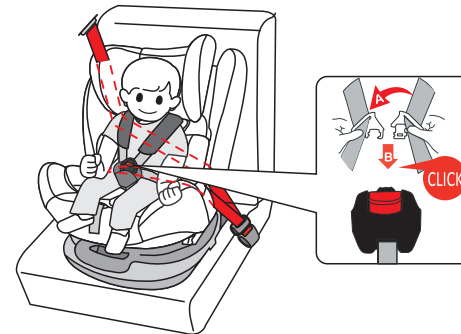
## GROUP I INSTALLATION

Detailed Installation of FIX Interface + Vehicle-mounted 3-point Seatbelt  
(Suitable for children aged 9-18 kg, 9 months to 4 years old)



1. **Release the shoulder strap:** press the adjusting button of the shoulder strap with one hand, and pull the shoulder strap outward with the other hand until the shoulder strap reaches its maximum length, finally release the safety buckle

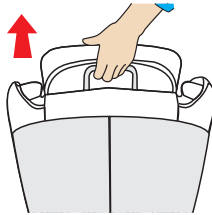
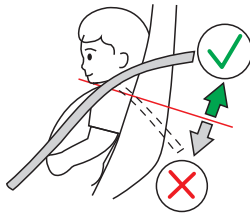
2. **Release the clip:** Press the button and pull out the insert.



3. **Place the child:** place the child in the chair. And let its left and right arms through the shoulder straps. Put left and right inserts together and buckle it until you hear the "click", pull the insert to check whether it buckled

## GROUP I INSTALLATION

Detailed Installation of FIX Interface + Vehicle-mounted 3-point Seatbelt  
(Suitable for children aged 9-18 kg, 9 months to 4 years old)



4. **Pillow adjustment:** pull up the adjust handle to adjust the pillow position, so that strap height in the pillow is slightly higher than shoulder position, which should be based on the width of one finger.

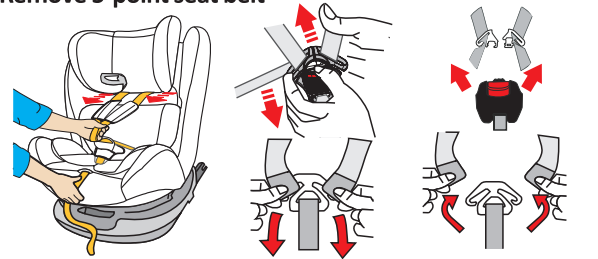


▲ **Note:** Adjusting the shoulder strap until the shoulder pads close to the child's chest. The tightness is based on the thickness of the adult index finger.

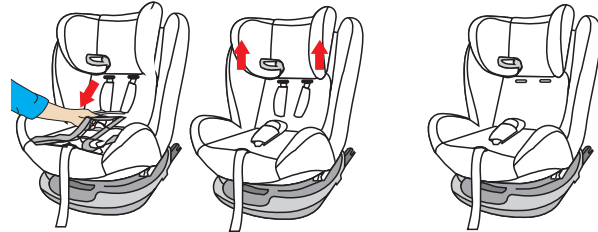
5. Pull the adjusting belt forward to tighten the shoulder strap. make sure the shoulder strap does not twist, lengthen or loosen.

## REMOVE AND INSTALLATION OF 5-POINT SEATBELT

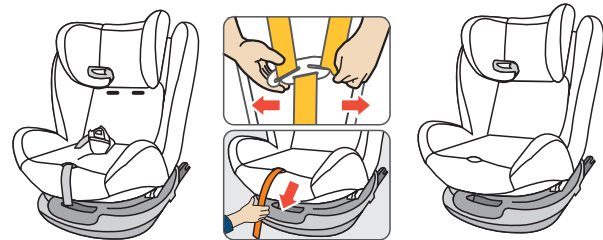
### Remove 5-point seat belt



1. Press the seat belt adjustment button with your forefinger, and pull the shoulder strap outward with the other hand. You can release the shoulder strap, release the buckle, and remove the shoulder strap



2. Remove the shoulder belt pads



3. Remove the buckle and storage the adjusting strap in the groove on the back.

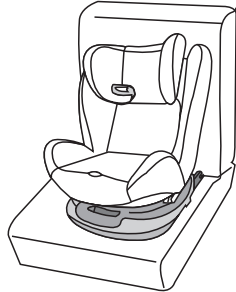
## GROUP II+III INSTALLATION

### Group II+III Seat Installation (for 15-36kg, approx 3-12years old children) -----

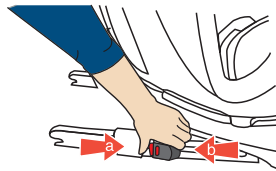
- 1.Children's car seat must be Forward-facing.
- 2.Remove the 5-point seat belt system inside the car child seat.
- 3.Fitting ways:
  - ① fitting by using FIX interface and vehicle safety belt to secure both child restraint and the child.
  - ② Using vehicle safety belt to secure both child restraint and the child



### Fix child and seat -----

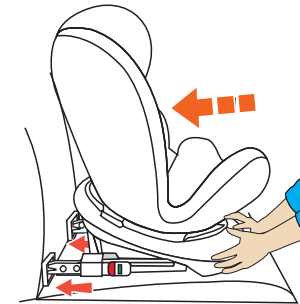
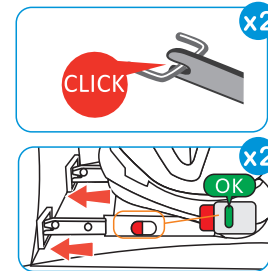


- 1.Place the child seat forward facing on the vehicle seat

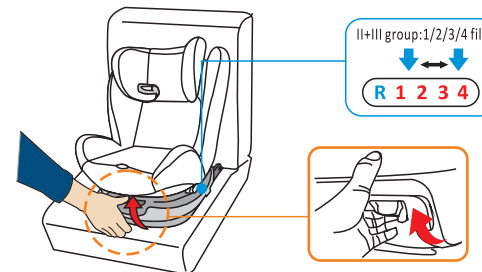


2. Release the ISOFIX interface by pressing the red part of the ISOFIX interface button inward [a], and then launch the ISOFIX interface [b]

## GROUP II+III SEAT INSTALLATION ① Group II+III Installation (for 15-36kg, approx 3-12years old children)



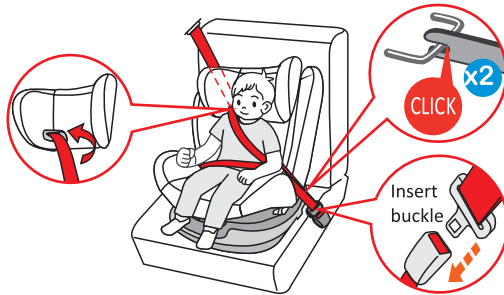
3. Align the ISOFIX interface on both sides to the vehicle guide sleeve and insert it forcefully, until hear the click.To make sure if it is installed successfully, please check if the indication inside the button is green like the photo shown,if it is red,please reinstall again until it is in green.Push the child safety car seat firmly against the vehicle back.



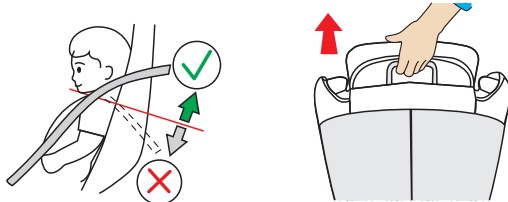
- 4.Adjust the recline position by pulling the recline adjust handle. Release the handle to the position 1,2,3 or 4 you want.

**GROUP II+III SEAT INSTALLATION ①** Group II+III Installation  
(for 15-36kg, approx 3-12 years old children)

**Place the child in the child seat**



1. Place the child in the car child seat, pull out the vehicle belt, place the diagonal belt goes through the guide hook on headrest, then buckle it until you hear the click.



2. **Pillow adjustment:** pull up the adjust handle to adjust the pillow position, So that strap height in the pillow is slightly higher than shoulder position, which should be based on the width of one finger.



**⚠ Note:** Vehicle seat belts should not be loosened or twisted during the whole installation process.

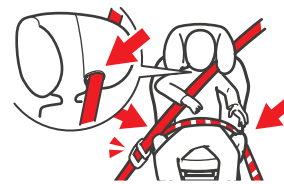
**GROUP II+III INSTALLATION ②** By using the 3 point of vehicle safety belt  
(for 15-36kg, about 3-12 years old children)



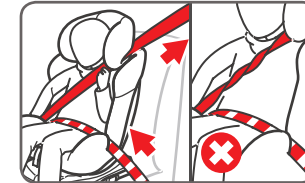
Make the child car seat forward facing by pulling the rotation handle on the base and adjust the recline position 1,2,3, or 4 by pressing the recline adjusting handle, make the child car seat used as group II and III.



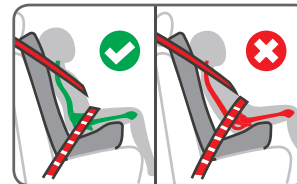
Place the child car seat firmly against the back of the vehicle seat and pull out the vehicle safety belt as longer as possible.



Place your child on the child car seat, make sure that your child's back firmly against to your car seat. Let the vehicle safety belt go through three points as the photo shown and then buckle.



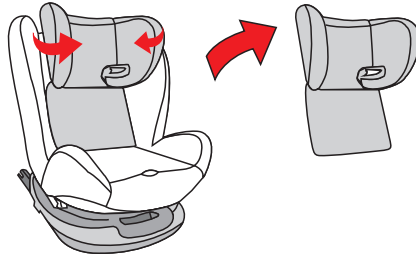
Tighten the vehicle safety belt by pulling the belt along the directly as the photo shown. Make sure the the belt go through the above positions correctly and not twist.



**Notice:** Make sure that the vehicle lap belt can secure the child's pelvis well.

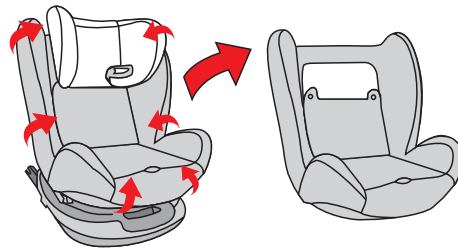
## REMOVE AND INSTALLATION OF SAFETY SEAT COVER

### Remove headrest sleeve



Release the rubber band of the pillow and remove the pillow cloth cover

### Remove the seat-back cover



Remove the cloth cover from bottom to top

**⚠ Attention!** If you need to install the cloth cover follow the above instructions in reverse order.

## SAFETY SEAT MAINTENANCE AND PRESERVATION

### Important tips:

Seat cloth cover is an important part of ensuring the safety performance of car children's safety seats. Do not use car children's safety seats without seat cloth cover. It is forbidden to use any other product instead of the original child seat covers which will make children in danger. Because other products can not make children's car seat play its due role in safety protection.

### Safety Seat Maintenance:

- If there is a slight stain on the outside surface of chair body or clasp, gently wipe it with a sponge with neutral cleaning.
- Five-point buckle is an important safety component. It is forbidden to immerse 5-point seat belt buckles in liquid.

#### Webbing cleaning

- A neutral detergent diluted below 30 degrees can be used to wipe the webbing. Do not let the liquid touch the metal parts on the webbing.
- Please use water below 30 degrees to add neutral detergent and gently rub it with your hands.

**⚠ Note:** Overweight scrubbing will destroy the surface of the cloth cover and the sponge layer.



Slight



Non-chlorine  
bleaching agent



Do not iron



Non dehydration



Gentle



Spread out

### Safety Seat Preservation:

- Please check the seats' spare parts and seats' condition regularly to reduce the accident probability.
- Before use, pull the belt on the buckle to check whether the buckle is loose.
- Do not place your seat in a subcooled or overheated, humid environment for a long time.
- Please keep this instruction book for your reference at any time.

### Post-accident disposal:

After severe collisions and accidents, please replace them with new seats. If there are other problems, please contact the manufacturer or distributor.