

R for Rabbit®



*Picture shown is for illustrative purpose only.
Actual product may vary from image.

TINY TOES T40 ACE

Smart Plug N Play Baby Tricycle



Age Group
1.5-5 Yrs



Weight Capacity
25 Kgs

IS: 9873: PART 1



CM/L: 8700128717

Installation & User Manual

IMPORTANT - KEEP THESE INSTRUCTIONS FOR FUTURE REFERENCE.

FAILURE TO OBSERVE THESE INSTRUCTIONS MAY AFFECT THE SAFETY OF YOUR CHILD!



1.



2.



3.

- 1. Steel Frame
- 2. Front Basket
- 3. Front Wheel & Mudguard



4.



5.



6.

- 4. Cushioned Seat
- 5. Rear Wheel Set
- 6. Front Handle



7.



8.



9.

- 7. Parental Handle (C)
- 8. Back Basket
- 9. Nail & Bell



10.



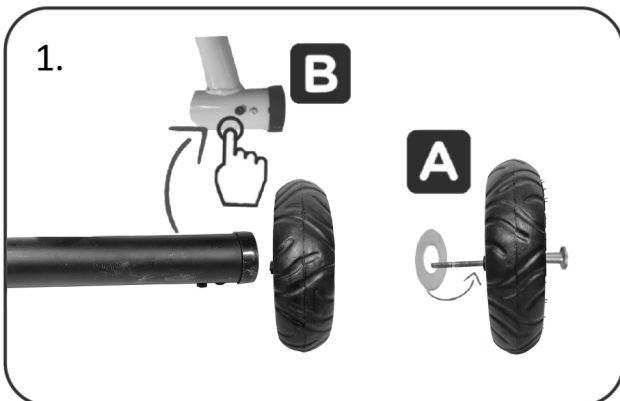
11.



12.

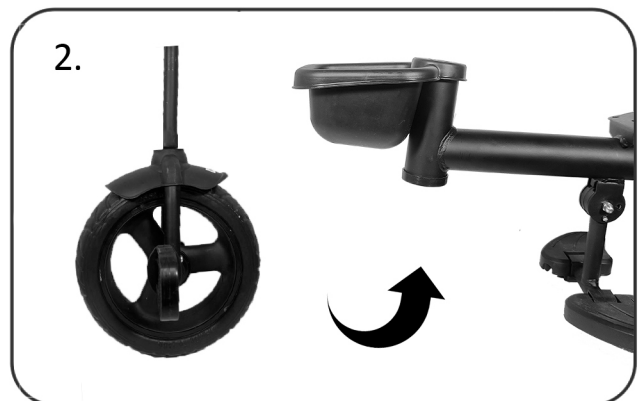
- 10. Rod (B)
- 11. T-Frame
- 12. Canopy

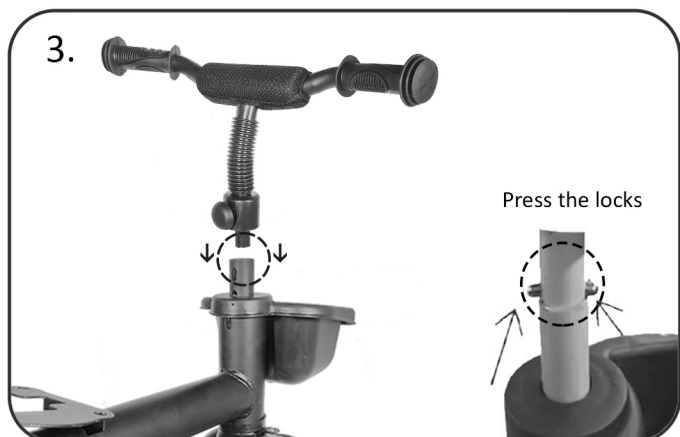
Installation



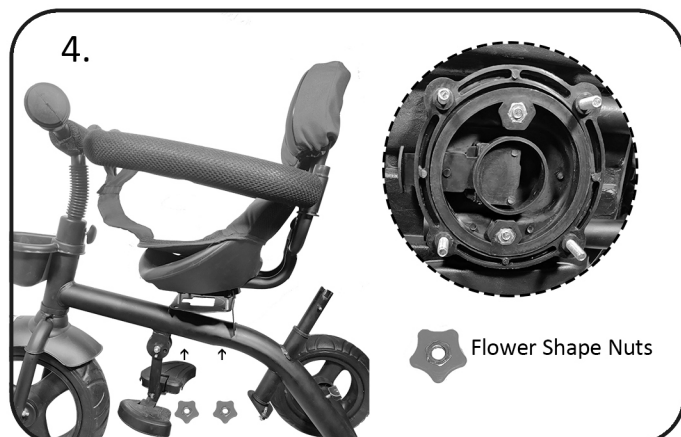
1. Insert the pin inside the rear wheel as shown in pic-A, followed by securing the pin with the washer. Press the button at the bottom of the frame, as shown in pic-B, and insert inside the pin. Cover the wheel with the wheel cap to secure it in place. Pull and check if it is properly locked.

2. Insert the front basket in the frame, followed by inserting the assembled front wheel set from the bottom.

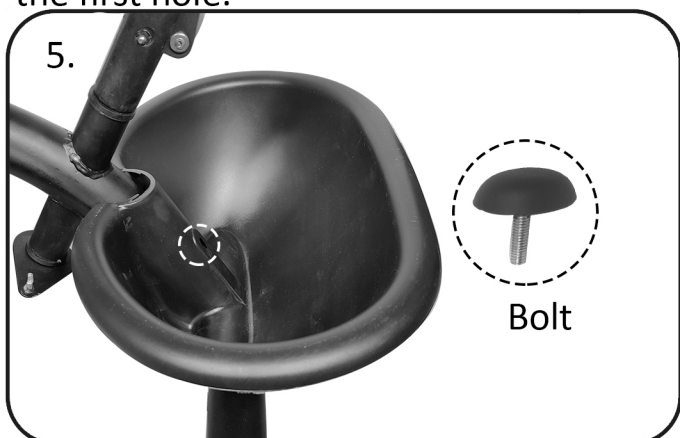




3. Press both the locks on the handle and insert it into the front wheel fork. Release the lock to set the handle in bottom hole place. Lower the black cap and tighten using the pre fitted bolt in the first hole.



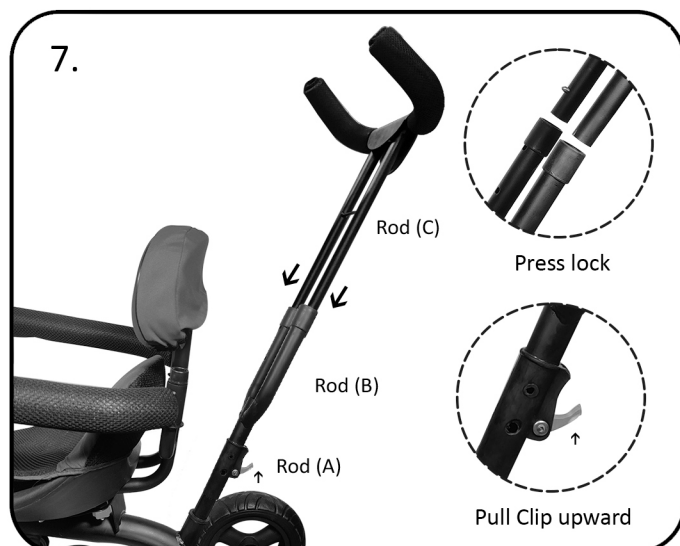
4. Attach the seat using the provided flower shaped nuts as shown in the image.



5. Attach the back basket using the bolt screw as shown in the image.



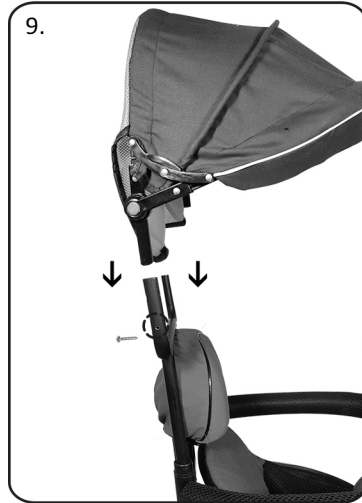
6. Insert the Rod (B) into Rod (A) by pressing the double lock on Rod (A).



7. Insert the parental handle into Rod (B) by pressing the lock. Pull the red clip upward to lock the handle in place.



8. Insert T-frame into the backrest.



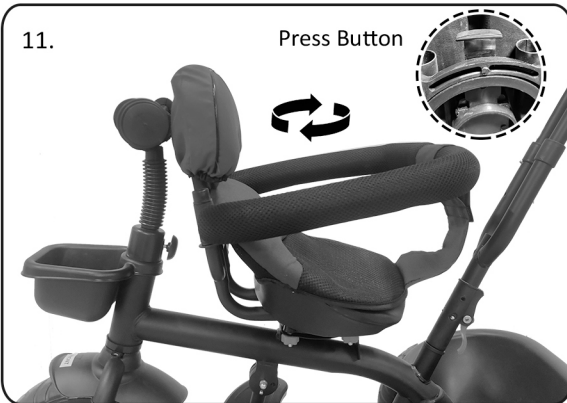
9. Attach the canopy into the T-frame & tighten it using the screw.

FRONT



BACK

10. Inset the hook shaped rod in the front (just above the mudguard) and tighten it using the nut in the back side, as shown in the picture. The alignment of front handle & parental control can be done by adjusting the nuts on the movement bar.



11. Press the shown button to revolve the seat.

NOTICE

1. This tricycle is fit for children of age 1.5 to 5 years only.
2. Never leave your child unattended when in use
3. Avoid using the tricycle near thresholds, stairs or irregular surfaces to avoid injuries.
4. The tricycle is suitable to carry weight is upto 25kgs.
5. It isn't recommended to use the tricycle on slopes, driveways, busy roads or streets.
6. The tricycle should be used by caution to avoid any falls or collisions.

WARNING

1. Should be assembled by an adult
2. Keep it away from the street or road with traffic
3. Do not overload and keep away from fire.

MAINTENANCE

1. Clean the tricycle with a damp cloth instead of auto wax or water.
2. Please check on the screws periodically to ensure it's not losing or missing.



DESIGNED & MARKETING BY: R for Rabbit Baby Products Pvt.Ltd.

708,7th Floor, Pinnacle Business Park, Corporate Road, Prahlad Nagar, Ahmedabad, Gujarat 380015
+91-079-410-57595 | customer@rforrabbit.com | www.rforrabbit.com

Manufactured by: Trifox Toyz LLP 12/32, Site-4, Industrial Area, Sahibabad, Ghaziabad, UP 201010