

# 260.00 mm

Please read the instructions carefully before installing the stroller and keep it safe for your future reference. If the instructions are not followed properly for the safety of baby.

**WARNING:**

- 1.Never leave child unattended. Always keep child in view while in stroller.
- 2.To avoid serious injury from falling or sliding out. Always use seat belt. After fastening buckles, adjust belts to get a snug fit around your child.
- 3.Never carry more than one child at a time in the stroller.
- 4.Do not hang any items on the handles of the stroller as this makes the stroller unstable.
- 5.Ensure that children are clear of moving parts before making any adjustments to the stroller.
- 6.Ensure that all persons who operate this stroller know how to operate it safely.
- 7.Do not allow children to play with or hang on the stroller.
- 8.Do not use your stroller for anything other than its intended purpose.
- 9.Be careful when going up or down curbs, stairs, and escalators. Remove your child and fold the stroller when going up or down stairs or escalators.
10. The stroller is suitable for 0-36 months baby.
11. Before use remove and dispose of all plastic bags and packaging material and keep them out of reach from children.
12. Use the swivel wheel mode on smooth surfaces, we recommend you to lock the swivel wheels on uneven surfaces.
- 13.Do not use any accessories, spare parts, or components that were not supplied by the manufacturer. They may make the stroller unsafe.
- 14.Do not use the stroller if any part is lost or damaged.
- 15.Any unauthorized modifications to this stroller will invalidate any manufacturer guarantees.

**MAINTENANCE & CARE:**

- 1.Clean the plastic parts of the pram with a damp cloth. Do not use abrasives or bleach.
- 2.Clean and lubricate the wheels, safety locks (where appropriate). For sliding parts use light oil or a silicon spray.
- 3.Do not use heavy oil-based lubricants as this will attract dust and grit which tends to clog and
- 4.damage moving parts.

**FABRIC CARE:**

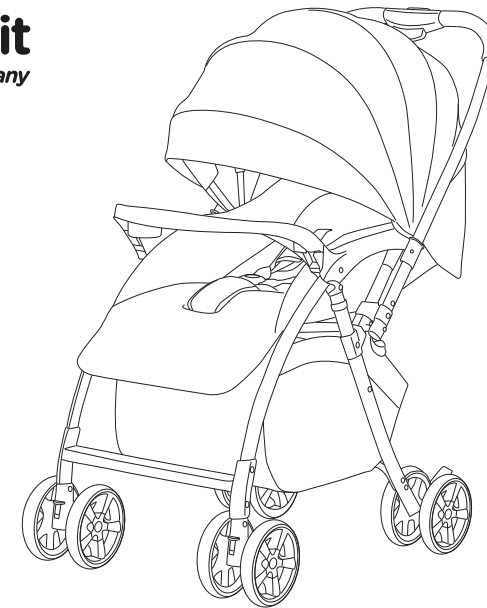
- 1.If the pram becomes wet, do not fold the hood when you take the pram indoors. Always leave the pram to dry naturally and do not expose pram to strong heat sources like res, radiators and direct sunlight.
- 2.Whilst fabrics are carefully selected and tested, washing, wearing and exposure to direct sunlight may cause the color to fade or change.
- 3.The exposed edges of fabric covers are often the first to wear and fray. Remember this when storing or transporting your pram and accessories.
- 4.Light soiling to the pushchair can be removed with a damp sponge and a mild detergent.

**WASHING INSTRUCTIONS:**

Wipe only, do not use abrasives or bleach.



**R for Rabbit**  
The Amazing Baby Company

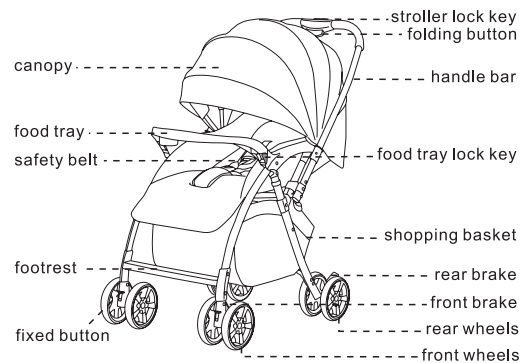


**SUGAR POP**  
- An Ideal Prams for Parents

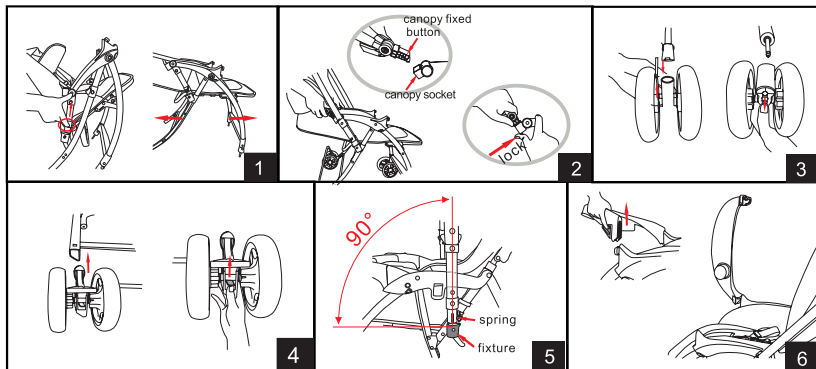
制单编号
WM 2020089
图号
WM30004 -PM-7
我司型号:
HP-712golf
说明书
客户及型号:
印度R For Rabbit
尺寸:
260*185mm
材质:
128g铜板
批准
审核
制表:

日期:

185.00 mm



### Assemble way:



1. Opening the frame: Photo 1 - use your fingers to lift the locks, which are located on both sides of the frame, upwards and the frame of the stroller will be unlocked. then lay out the front and rear parts of the frame of the stroller in the directions indicated by the arrows until you hear a characteristic click, which means that everything is in order.

2. Install canopy: as photo2, inset the fixed button to canopy socket by 45 degree, then fix the lock .it's ok when hear "ka da". Take down canopy: push up the canopy fixed button to take down the canopy.

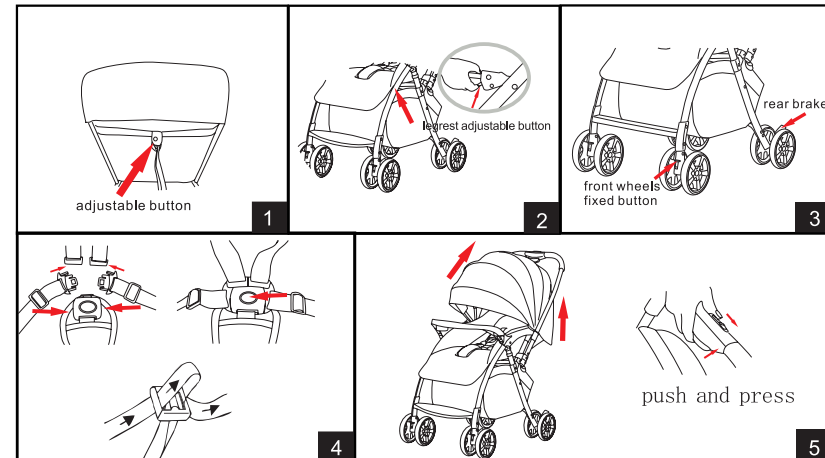
3. Install and take-down of front wheel group: insert the front wheel group into the cover core of front foot tube, when the barb of cover core of front wheel spring out ,the installation is ok. If you need to take down the front wheel, just hold the barb and pull out the wheels, then the front wheel group will be taken down.

4. Install and take down of rear wheel group: forced the rear wheel group into the back foot tube, when the spring piece come out and lock is ok, Press down the spring piece and pull out the wheels, the rear wheel could be take down.

5. As shown in the figure, adjust the handle bar to vertical with the ground , then insert the end of the handle bar into fixture of both sides. When you hear a click sound it is installed properly. When remove the handle bar ,first adjust the handle bar to vertical with the ground , then press the spring and pull out as shown in the figure.

6. Install food tray: insert down the food tray, it's ok when hear "ka da". take down food tray: push up the food tray, and press the lock key in the same time. use the food tray, take down one side of food tray, and rotate 270 degree for take baby out.

### Using way:



1. Press the button down and up to adjust the backrest.

2. Press the two side button to adjust legrest as the photo showed.

3. Step on the brake link to lock stroller, the opposite way to open it. push the fixed button up and down the fix and open the direction of the front wheels.

4. Buckle the four belts, then insert to the middle button, it's locked when hear "ka da" . Press the button in the middle of safety buckle to open it. Adjust the shoulder belt and the waist belt to a more comfortabel position.

5. Folding stroller: brake the stroller, adjust the backrest to the highest position and close the canopy, then push the lock key press the folding button, and push down the stroller, it's ok when hear "ka da".



Imported & Marketed By:

**R FOR RABBIT BABY PRODUCTS PVT. LTD.**

Add: 708, 7th Floor, Pinnacle Business Park, Corporate Road, Prahlad Nagar, Ahmedabad, Gujarat 380015

C: +91-79-410-57595 | W: www.rforrabbit.com | E: customercare@rforrabbit.com